

Software Configuration Management



**NoviQ car
Lego Exercise**

Practice -1-



- ◆ 6 Teams
- ◆ Exercise 1a: 2 groups in a team
- ◆ Exercise 1b: integration (team)
- ◆ Exercise 2: component building (team)
- ◆ Exercise 3: adapting the NoviQ car (team)
- ◆ Exercise 4: Merging results of teams

Practice -2-

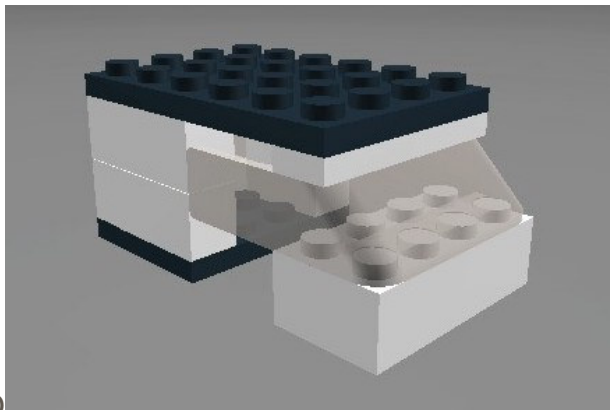
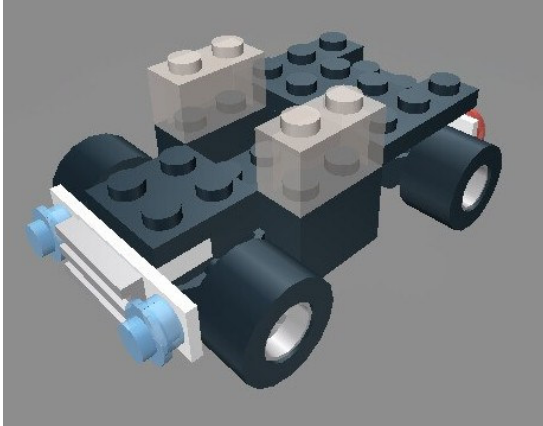


- ◆ Lego Box
 - ◆ 1 bag for exercise 1
 - ◆ Bill of Material: divide bag 1 into 2 groups
 - ◆ 1 bag for exercise 2
- ◆ Finalise Practice
 - ◆ Build original car (exercise 1)
 - ◆ Build original components (exercise 2)
 - ◆ Put it in the bags again and the box



Exercise 1

◆ Component(s)



Integration



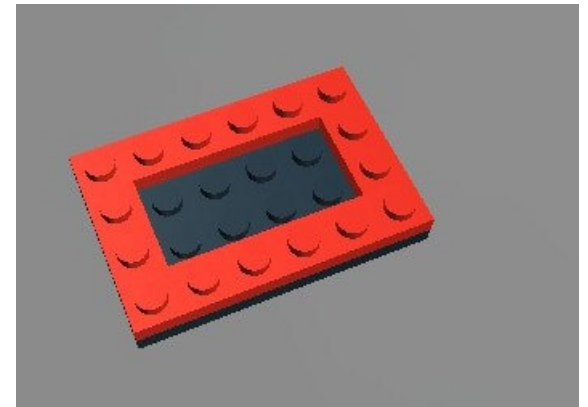
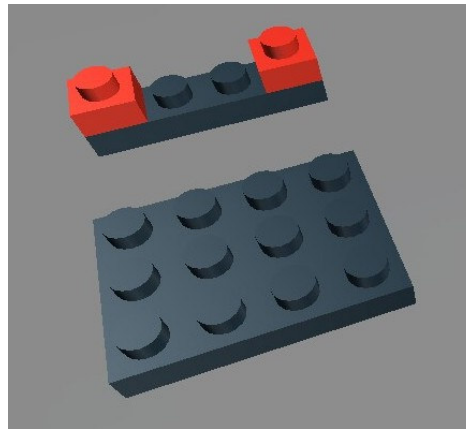
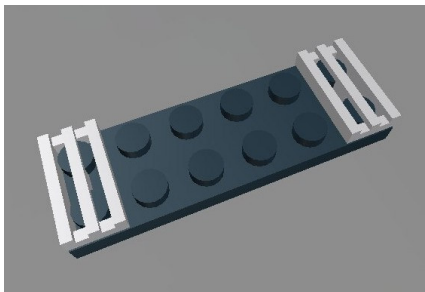
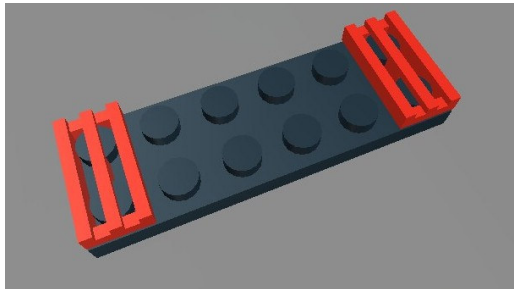
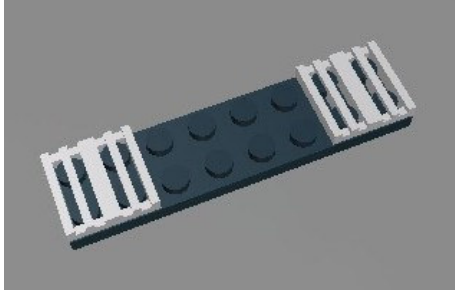
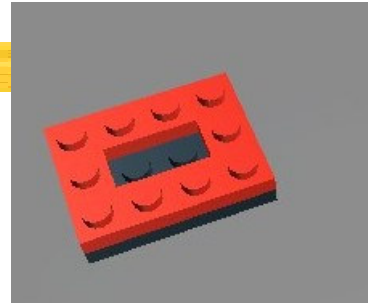
What did you learn?



- ◆ Bill Of Material
- ◆ Result of Product Engineering
- ◆ Component Production
- ◆ Integration of a System

Exercise 2

◆ Component Building

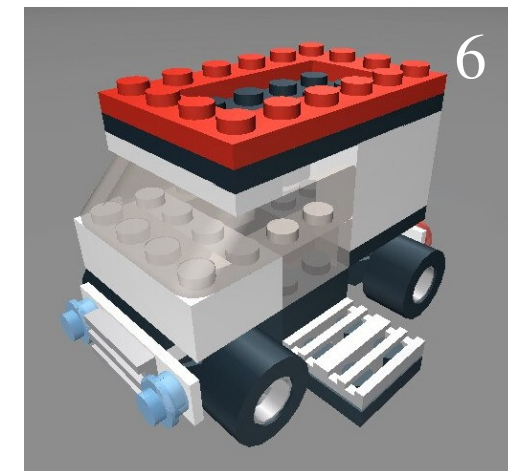
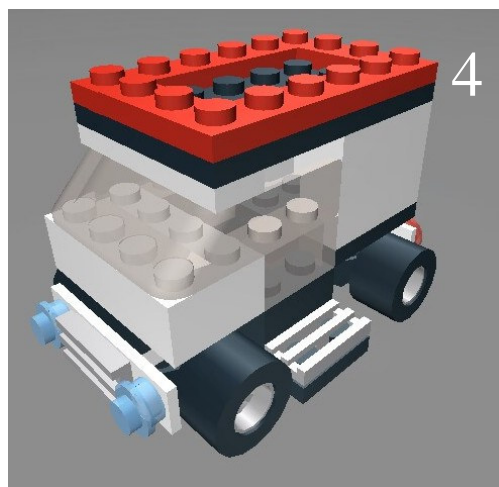
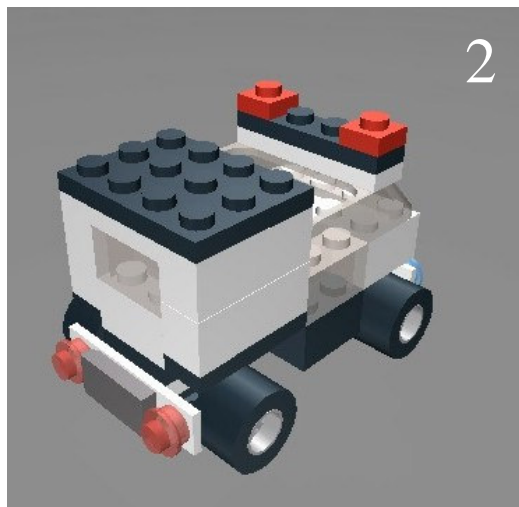
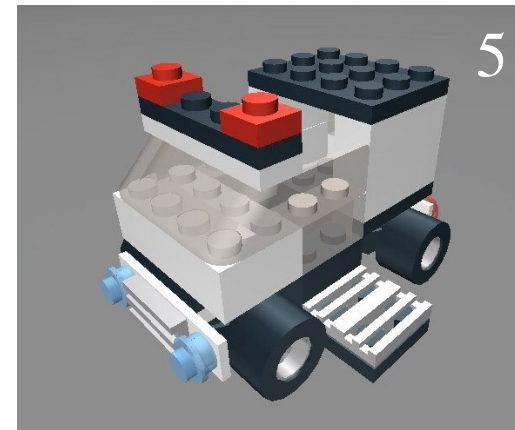


What did you learn?



- ◆ Evolution of a NoviQ car
- ◆ Component Specifications

Exercise 3



3-April-2007

What did you learn?

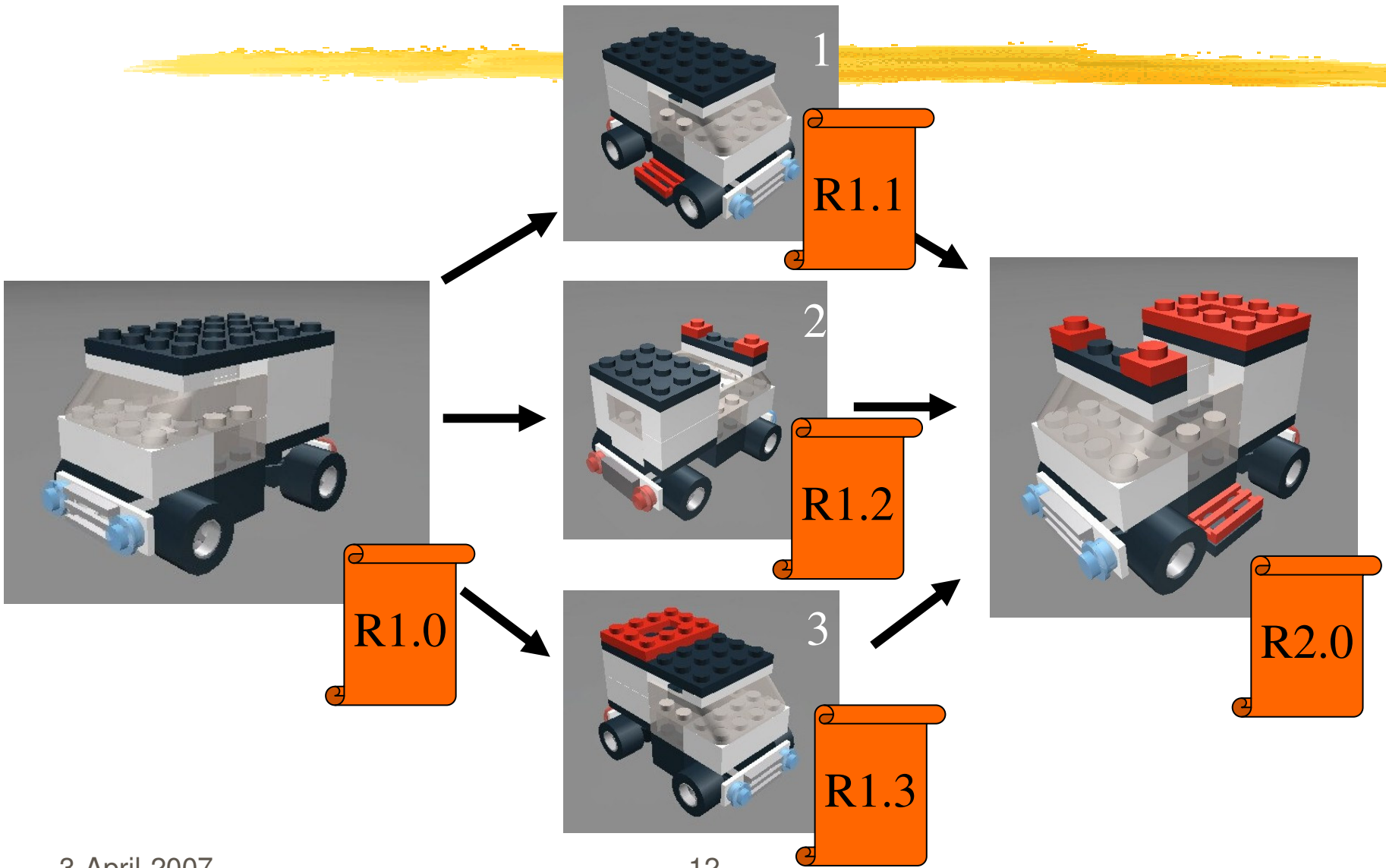


- ◆ Evolution of System
- ◆ Component integration (in existing system)
- ◆ Many versions in the “field”

Exercise 4



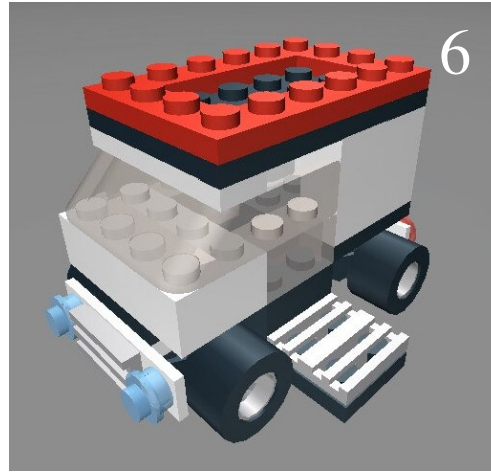
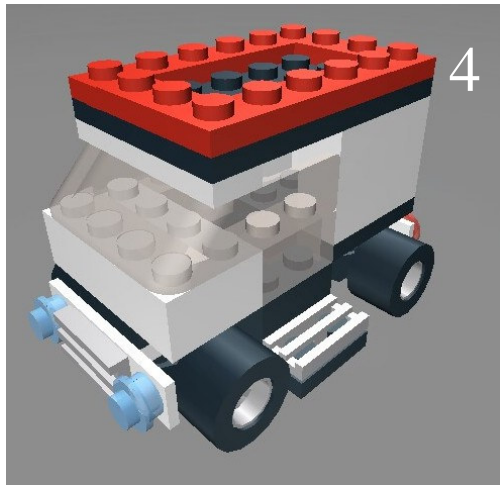
- ◆ Team 1, Team 2 and Team 3
 - ◆ Simple merge
- ◆ Team 4 and Team 6
 - ◆ Should have been the same
- ◆ Team 5 and Team 6
 - ◆ Roof Rack does not match with Open Roof



3-April-2007

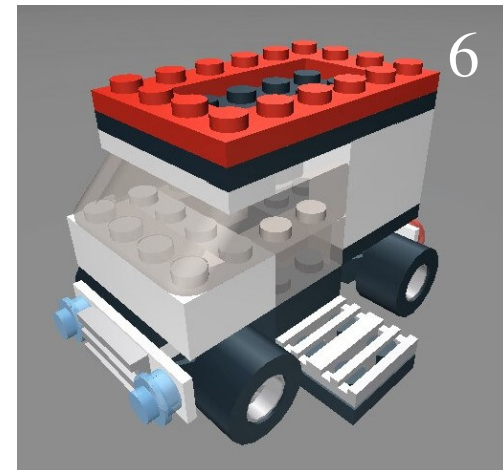
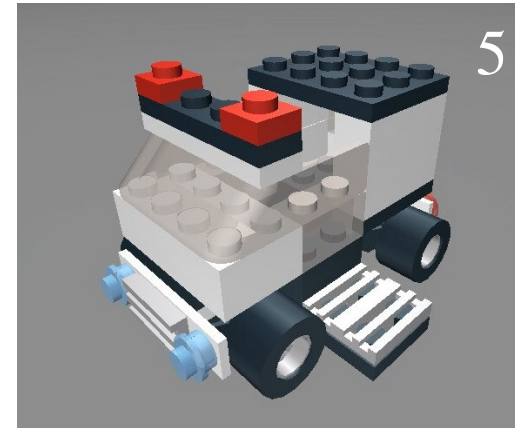
Team 4 and Team 6

- ◆ Change Request for a Tray
 - ◆ Uncoordinated, implemented twice



Team 5 and 6

- ◆ Roof does not match



What did you learn?



- ◆ Branching and Merging
- ◆ Change Request coordination
- ◆ Design Coordination